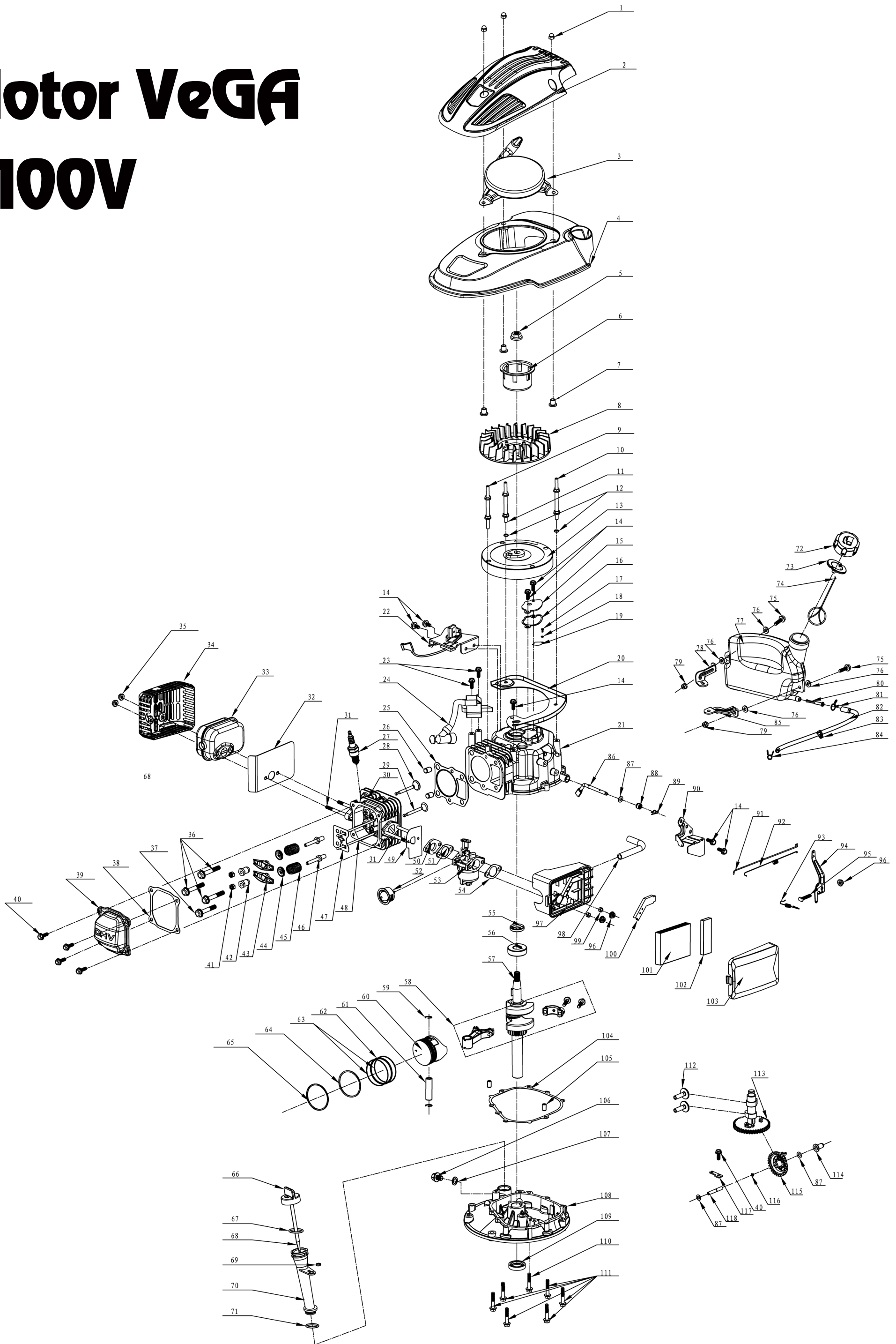


Motor VeGA Y100V



Y100V Motor VeGA

Číslo	č. dílu	Popis	Počet ks
1	B2002B00000	Nut M6	3
2	Y1A10000012	Engine Cover	1
3	Y1A20000100	Recoil Start Assy	1
4	Y1A30000010	Blower Housing	1
5	B2014W00000	Nut M12x1.25	1
6	Y1A50000000	Start-up Hub	1
7	Y1A40000000	Blower Housing Bush	3
8	Y1A60000000	Fan	1
9	Y1A70000000	Blower Housing Fixing Bolt I	1
10	Y1A80000000	Blower housing Fixing Bolt II	1
11	Y1A90000000	Blower Housing Fixing Bolt III	1
12	B6005W00000	Spring Washer $\phi 6$	2
13	Y1B10000000	Flywheel Assy	1
14	B1057W06010	Bolt M6x10	7
15	Y1250000000	Respirator Cover Plate	1
16	Y2240000000	Gasket of Respirator Cover	1
17	B3011W00000	Screw M3x6	1
18	B6002B00000	Spring Washer	1
19	Y1230000000	Valve Element of Respirator Cover	1
20	Y1AA00000000	Air Deflector	1
21	Y1210000000	Crankcase Assy	1
22	Y1710000000	Brake Assy	1
23	B1064W06025	Bolt M6x25	2
24	Y1B20000000	Ignition	1
25	Y1120000000	Gasket of Cylinder Head	1
26	Y2260000000	Locating Pin of Cylinder Head	2
27	Y2B30000000	Spark Plug	1
28	Y2520000000	Inlet valve	1
29	Y2530000000	Outlet valve	1
30	Y1110000000	Cylinder Head Assy	1
31	B4001W06078	Two Stud Bolt M6*78	4
32	Y1930000000	Gasket of Muffler	1
33	Y1910000000	Muffler Assy	1
34	Y1920000000	Muffler Cover Assy	1
35	B2016W00000	Locknut M6	2
36	B1044W08045	Locknut M8*45	3
37	B1043W08040	Locknut M8*40	1
38	Y1130000000	Gasket of Cylinder Head	1
39	Y1150000000	Cylinder Head Outer Cover	1
40	B1058W06012	Bolt M6x12	5
41	Y25A00000000	Combined Nut	2
42	Y2590000000	Adjust Nut of Valve	2
43	Y1570000000	Rocker of Valve	2
44	Y2550000000	Spring Coil of Inlet Valve	2
45	Y1540000000	Spring of Valve	2
46	Y2580000000	Rocker Support Bolt of Valve	2
47	Y15E00000000	Guide Board of Handspike	1
48	Y15C00000000	Handspike Assy	2
49	Y1810000000	Paper Gasket of Inlet Pipe	1
50	Y1820000000	Air Inlet Pipe	1
51	Y1830000000	Paper Gasket of Carburetor	1
52	Y18P00000012	Primer	1
53	Y1850000000	Carburetor	1
54	Y1840000000	Paper Gasket of Air Filter	1
55	BC002B00000	Oil Seal 17x30x6	1
56	B0005W00000	Ball bearing	1

57	Y141000000	Crankshaft Assy	1
58	Y147000000	Connecting Rod Assy	1
59	Y149000000	Circlip of Piston Pin	2
60	Y142000000	Piston	1
61	Y148000000	Piston Pin	1
62	Y146000000	Scraper Ring	1
63	Y145000000	Bushing Ring	2
64	Y144000000	Piston Ring II	1
65	Y143000000	Piston Ring I	1
66	Y233110000	Lubricating Gauge Cap	1
67	BD006B00000	"O" Ring $\phi 20 \times \phi 3$	1
68	Y133120000	Lubricating Gauge	1
69	Y132120000	Lubricating Pipe bush	1
70	Y132000000	Lubricating Pipe	1
71	BD002H00000	"O" Ring $\phi 17.2 \times \phi 2.4$	1
72	Y28H0000000	Fuel Tank Cap	1
73	Y28F0000000	Seal Gasket of Fuel Tank Cap	1
74	Y28T0000000	Connecting Rope	1
75	B1063W06022	Bolt M6X22	2
76	Y28S0000000	Gasket	4
77	Y18D0000000	Fuel Tank	1
78	Y18N0000000	Right Bracket of Fuel Tank	1
79	B2008W00000	Nut M6	2
80	Y28E0000000	Filtering Net Duct of Fuel	1
81	Y28K0000000	Oil Pipe Circlip I	1
82	Y18J0000000	Oil Pipe	1
83	Y28U0000000	Oil Pipe Fixing Clip	1
84	Y28L0000000	Oil Pipe Circlip II	1
85	Y18M0000000	Left Bracket of Fuel Tank	1
86	Y1660000000	Speed Regulator Rocker Spindle	1
87	B5027B00000	Washer $\phi 6.5 \times \phi 15 \times 0.5$	6
88	BC006B00000	Oil Seal 6x11x4	1
89	Y2670000000	Springness Split Pin	1
90	Y2690000000	Speed Regulator Board	1
91	Y16B0000000	Handspike of Valve	1
92	Y26C0000000	Spring of Valve	1
93	Y16A0000000	Speed Regulator Spring	1
94	Y1680000000	Speed Regulator Rocker	1
95	B1085W06023	"T" type Bolt M6x23	1
96	B2012W00000	Nut M6	3
97	Y1870000000	Air Filter Pedestal	1
98	Y18A0000000	Exhaust Pipe $\phi 8 \times \phi 12 \times 130$	1
99	Y2890000000	Air Filter Bush	2
100	Y18B0000000	Exhaust Gas Cover Board	1
101	Y1880000000	Foam Filter Element	1
102	Y18C0000000	Filter Element	1
103	Y1860000000	Air Filter Upper Cover	1
104	Y1350000000	Gasket of Crankcase	1
105	Y2360000000	Locating Pin of Crankcase	2
106	B1016W10012	Draining Oil Bolt M10x1.25x12	1
107	B5021W00000	Draining Oil Bolt Gasket $\phi 10.5 \times \phi 15 \times 2$	1
108	Y1310000000	Crankcase Cover	1
109	BC003B00000	Oil seal 25x35x7	1
110	B1047W06040	Bolt M6X40	1
111	B1066W06033	Bolt M6X33	6
112	Y25B0000000	Tappet	2
113	Y1510000000	Camshaft Assy	1
114	Y2640000000	Sliding Sleeve	1
115	Y1610000000	Gear Shaft Assy	1

116	Y263000000	Circlip of Gear shaft	1
117	Y165000000	Gear Shaft Hold-down Plate	1
118	Y162000000	Gear Shaft	1