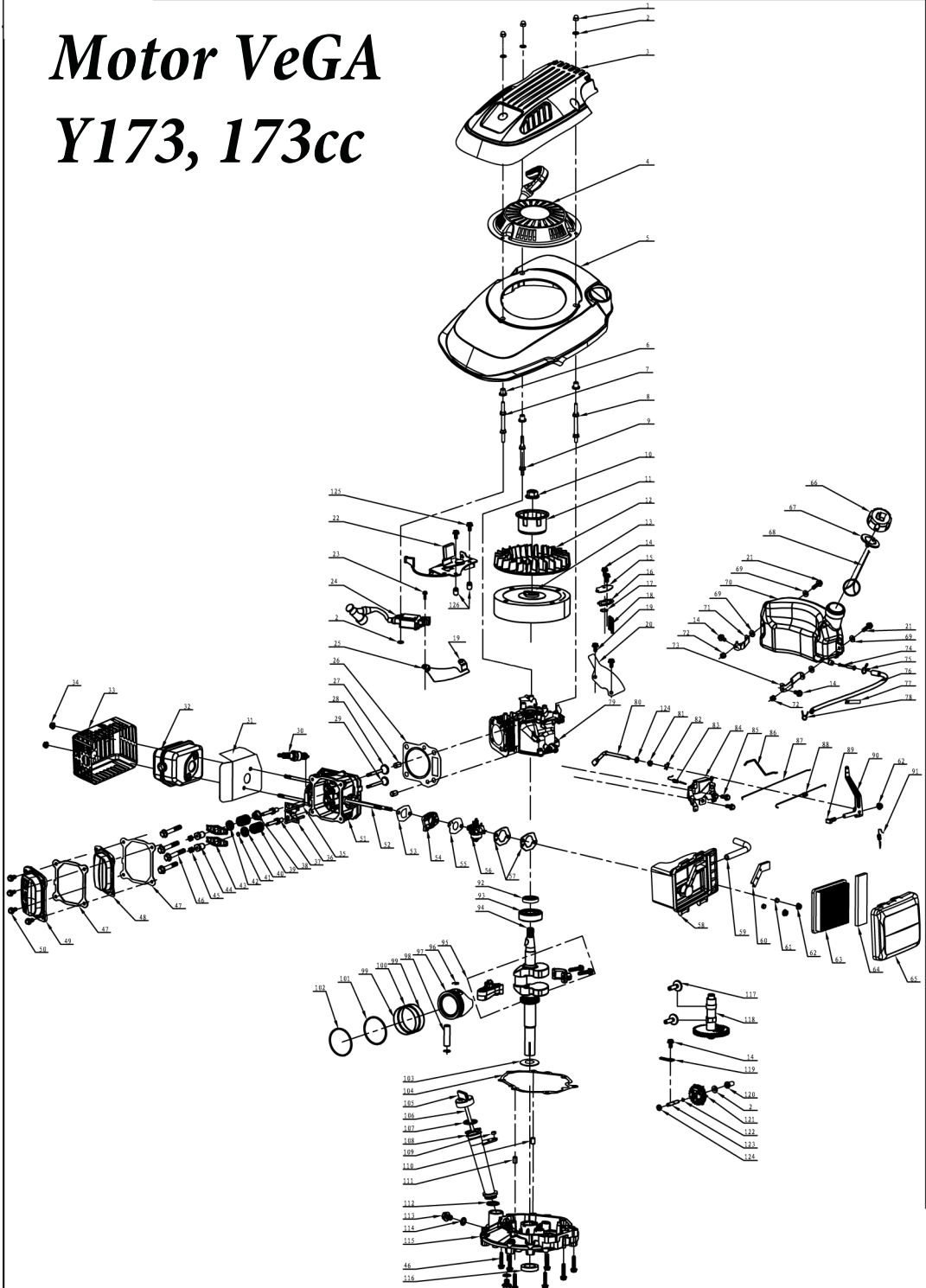


Motor VeGA Y173, 173cc



No.	ID Zboží	Název
1	B2002B00000	Nut M6
2	B5027B00000	"O" Ring $\phi 6.5 \times \phi 15 \times 0.5$
3	Y3A11000013	Engine Cover
4	Y2A20000000	Recoil Start Assy
5	Y3A30000000	Blower Housing
6	Y2A40000000	Bush
7	Y3A70000000	Bolt I
8	Y3A80000000	Bolt II
9	Y3A90000000	Bolt III
10	B2015W00000	Nut M14*1.5
11	Y3A50000000	Start-up Hub
12	Y3A60000000	Fan
13	Y3B10000000	Flywheel
14	B1058W06012	Bolt M6*12
15	Y3250000000	Respirator Cover Plate
16	Y3240000000	Gasket of Respirator Cover
17	Y3230000000	Valve Element of Respirator Cover
18	Y2220000000	Lubricate Filtering Net
19	B1057W06010	Bolt M6*10
20	Y3AA00000000	Back plate
21	B1063W06022	Bolt M6*22
22	Y3710000100	Brake Assy
23	B1064W06025	Bolt M6*25
24	Y2B20000000	Ignition
25	Y3AA00000100	Left plate
26	Y3120000000	Gasket of Cylinder Head
27	Y2260000000	Locating Pin
28	Y3520000000	Inlet valve
29	Y3530000000	Outlet valve
30	Y2B30000000	Spark Plug
31	Y2930000000	Gasket of Muffler
32	Y3910000000	Muffler Assy
33	Y3920000000	Muffler Cover Assy
34	B2016W00000	Locknut M6
35	Y35C00000000	Handspike Assy
36	Y35E00000000	Guide Board of Handspike
37	Y2580000000	Rocker Support Bolt of Valve
38	BC011H00000	Oil Seal of valve
39	Y3540000000	Spring of Valve
40	Y2560000000	Spring Coil of outlet Valve
41	Y25D00000000	upper cap of outlet Valve
42	Y2550000000	Spring Coil of Inlet Valve
43	Y2570000000	Rocker of Valve
44	Y2590000000	Adjust Nut of Valve
45	Y25A00000000	Combined Nut
46	B1080W08050	Locknut M8*50
47	Y2130000000	Gasket of Cylinder Head Cover
48	Y3140000000	Cylinder Head Inner Cover
49	Y3150000000	Cylinder Head Outer Cover
50	B1059W06014	Bolt M6*14
51	Y311100000000	Cylinder Head Assy
52	B4003W06094	Two Stud Bolt M6*92
53	Y3810000000	Paper Gasket of Inlet Pipe
54	Y3820000000	Air Inlet Pipe
55	Y3830000000	Paper Gasket of Carburetor
56	Y3850000100	Carburetor Assy
57	Y2840000000	Paper Gasket of Air Filter
58	Y2870000100	Air Filter Pedestal
59	Y38A00000000	Exhaust Pipe $\phi 8 \times \phi 12 \times 140$
60	Y28B00000000	Exhaust Gas Cover Board
61	Y2890000000	Air Filter Bush
62	B2012W00000	Nut M6
63	Y3880000000	Paper Filter Element

No.	ID Zboží	Název
64	Y28C00000000	Filter Element
65	Y28600000000	Air Filter Upper Cover
66	Y28H00000000	Fuel Tank Cap
67	Y28F00000000	Seal Gasket of Fuel Tank Cap
68	Y28T00000000	Connecting Rope
69	Y28S00000000	Gasket
70	Y28D00000000	Fuel Tank
71	Y38N00000000	Right Bracket of Fuel Tank
72	B2008W00000	Locknut M6
73	Y38M00000000	Left Bracket of Fuel Tank
74	Y28E00000000	Filtering Net Duct of Fuel
75	Y28K00000000	Oil Pipe Circlip I
76	Y38J00000000	Oil Pipe
77	Y28U00000000	Oil Pipe Fixing Clip
78	Y28L00000000	Oil Pipe Circlip II
79	Y32100000000	Crankcase Assy
80	Y36600000000	Speed Regulator Rocker Spindle
81	BC006B00000	Oil Seal $6 \times 11 \times 4$
82	Y26700000000	Springness Split Pin
83	Y26A0000200	Speed Regulator Spring
84	Y2690000300	Speed Regulator choke assy
85	B1072W06008	Bolt M6*8
86	Y36D00000000	Handspike of choke
87	Y36B00000000	Handspike of Valve
88	Y36C00000000	Spring of Valve
89	B1085W06023	"T" type Bolt M6*23
90	Y3680000100	Speed Regulator Rocker
91	Y36A0000100	Speed Regulator Vice Spring
92	BC004B00000	Oil Seal $22 \times 38 \times 7$
93	B0008W00000	Ball bearing
94	Y34100000000	Crankshaft Assy
95	Y34700000000	Connecting Rod Assy
96	Y34900000000	Circlip of Piston Pin
97	Y34200000000	Piston
98	Y34800000000	Piston Pin
99	Y34500000000	Scraper Ring
100	Y34600000000	Bushing Ring
101	Y34400000000	Piston Ring II
102	Y34300000000	Piston Ring I
103	Y34A00000000	Washer $\phi 25.5 \times \phi 36 \times 1.0$
104	Y33500000000	Gasket of Crankcase
105	Y23311000000	Lubricating Gauge Cap
106	Y33312000000	Lubricating Gauge
107	BD006B00000	"O" Ring $\phi 20 \times \phi 3$
108	Y33200000000	Lubricating Pipe
109	Y23212000000	Lubricating Pipe bush
110	Y23600000000	Locating Pin of Crankcase
111	Y33600000000	Locating Pin of Crankcase
112	BD004H00000	"O" Ring $\phi 21 \times \phi 2.3$
113	B1016W10012	Draining Oil Bolt
114	B5021W00000	Draining Oil Bolt Gasket
115	Y33100000000	Crankcase Cover
116	BC005B00000	Oil seal $25 \times 40 \times 7$
117	Y35B00000000	Tappet
118	Y35100000000	Camshaft Assy
119	Y26500000000	Gear Shaft Hold-down Plate
120	Y26400000000	Sliding Sleeve
121	Y26100000000	Gear Shaft Assy
122	Y26300000000	Circlip of Gear shaft
123	Y36200000000	Gear Shaft
124	B5026W00000	Gasket $\phi 6.5 \times \phi 12 \times \phi 1$
125	B1066W06032	Bolt M6 *35
126	Y37X00000000	Bush $\phi 6.5 \times \phi 12 \times 8$